



SIMPLIFY YOUR TRADES

POEMS Global Mobile
USER GUIDE



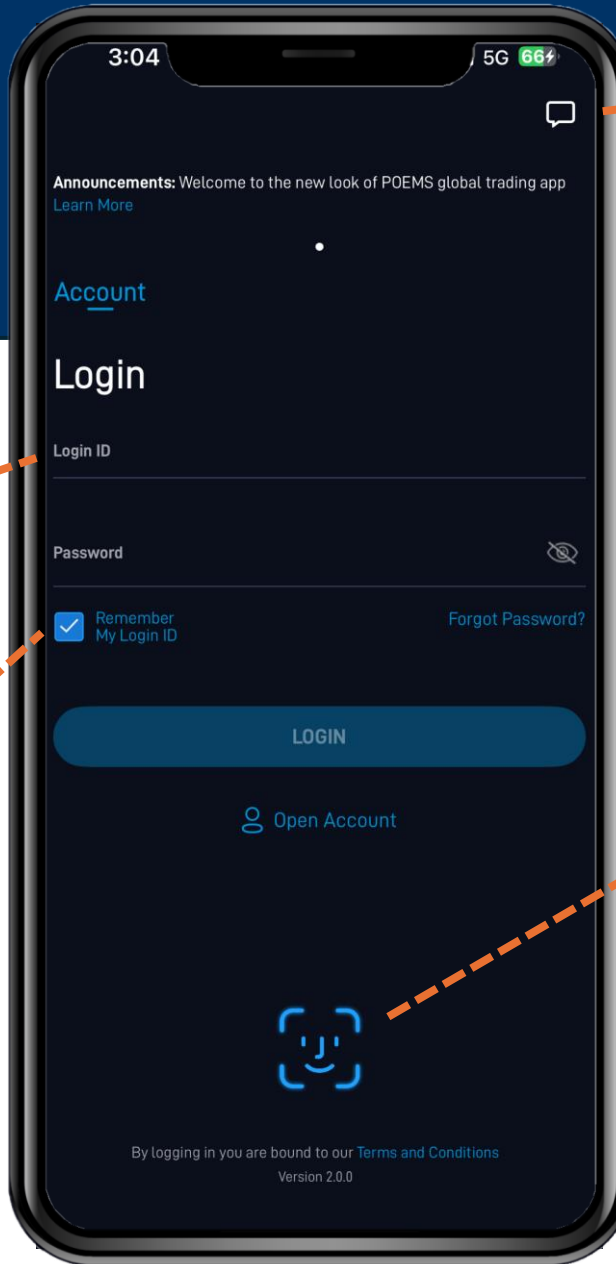
Disclaimer on the use of this User Guide

Please read this User Guide carefully before using the POEMS Global Mobile Application.

- **Important.** The data in respect of the markets and companies provided in this User Guide is for illustration purposes only and is not under any circumstances to be treated as an indication of what companies or markets to trade in.
- Phillip Capital Limited (“PhillipCapital”) has produced this user guide (“User Guide”) to show users a step-by-step process of how to use the POEMS Global Mobile Application on their mobile device.
- **DISCLAIMER ON THE USE OF THIS USER GUIDE**
- The mobile device shown in this User Guide is a mobile phone and, on each illustration, the mobile phone picture shows various information (“Information”). Information in the mobile phone pictures includes data (“Data”) in respect of markets (“Markets”) as well as companies or entities (together referred to as “Company” or “Companies”). The Data in respect of Markets and Companies includes but is not limited to graphs, charts, statistics, markets, Company codes, Company share prices, Company share prices changes and Company share price performance. The Data also includes Company information as stated in the POEMS Global Mobile Application headings; Stocks, Orders, Latest News, and Positions.
- **It is important to note** that the Data in respect of the Markets and Companies provided in this User Guide is for illustration purposes only, and is not under any circumstances to be treated as an indication of what companies or markets to trade in.
- To the maximum extent permitted by law, PhillipCapital will not be liable for any direct, indirect, incidental or consequential losses or damages which may be incurred from the use of the POEMS Global Mobile Application, the Information and the Data.
- PhillipCapital reserves the right to discontinue or change specification or design of the POEMS Mobile Application at any time without notice and without incurring any obligation whatsoever.
- You may wish to seek advice from your own personal professional adviser before using the POEMS Mobile Application.

WARNINGS: This document is intended to provide background information only and does not purport to make any recommendation upon which you may reasonably rely without further and more specific advice. To the extent that this document contains advice: (i) this is limited to general advice only; (ii) has been prepared without taking into account your objectives, financial situation or needs; and (iii) because of this you should therefore consider the appropriateness in light of your objectives, financial situation or needs, before following the advice. To the extent that this document contains any advice, we recommend that you do not act on this advice without first consulting your investment adviser to determine whether the advice is appropriate for your investment objectives, financial situation and particular needs. **Past performance is not a reliable indicator of future performance**, and no representation or warranty, express or implied, is made regarding future performance.

Login



Tap to contact a member of our team

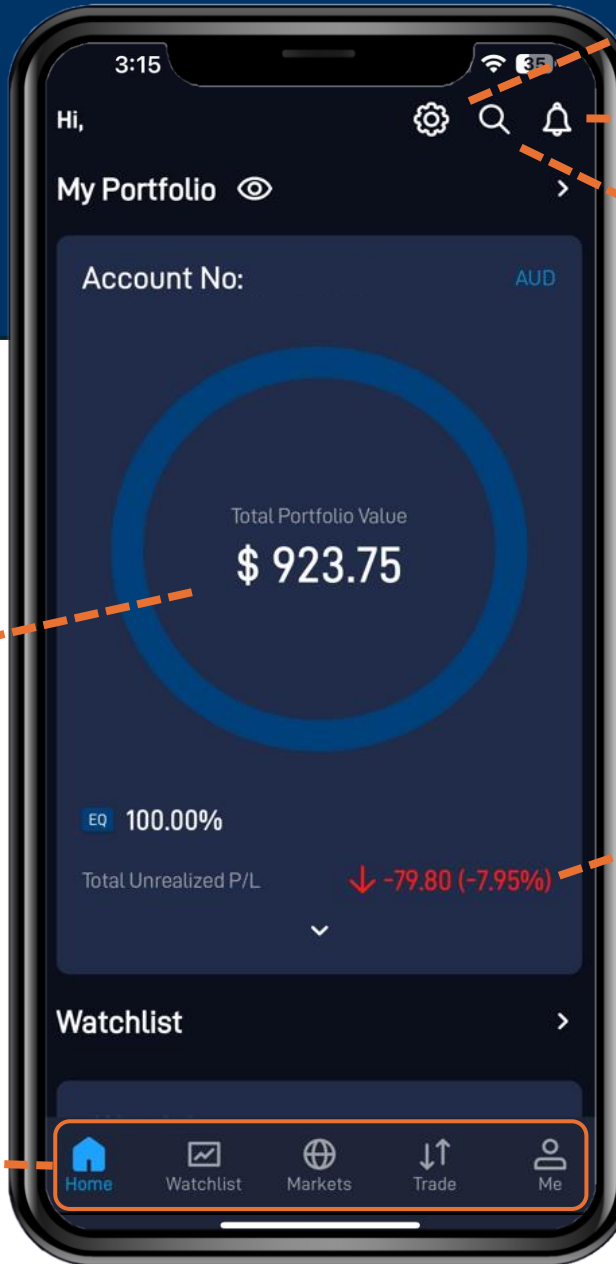
Login with your POEMS Account number and Password

Check this option to have the app remember your account number

Use Touch/Face ID to login. First time set-up is required

Homepage

My Portfolio



Tap to open home customization options

Tap to access notifications centre

Tap to access search bar to find stocks

Portfolio display of current value

Current Unrealised P/L

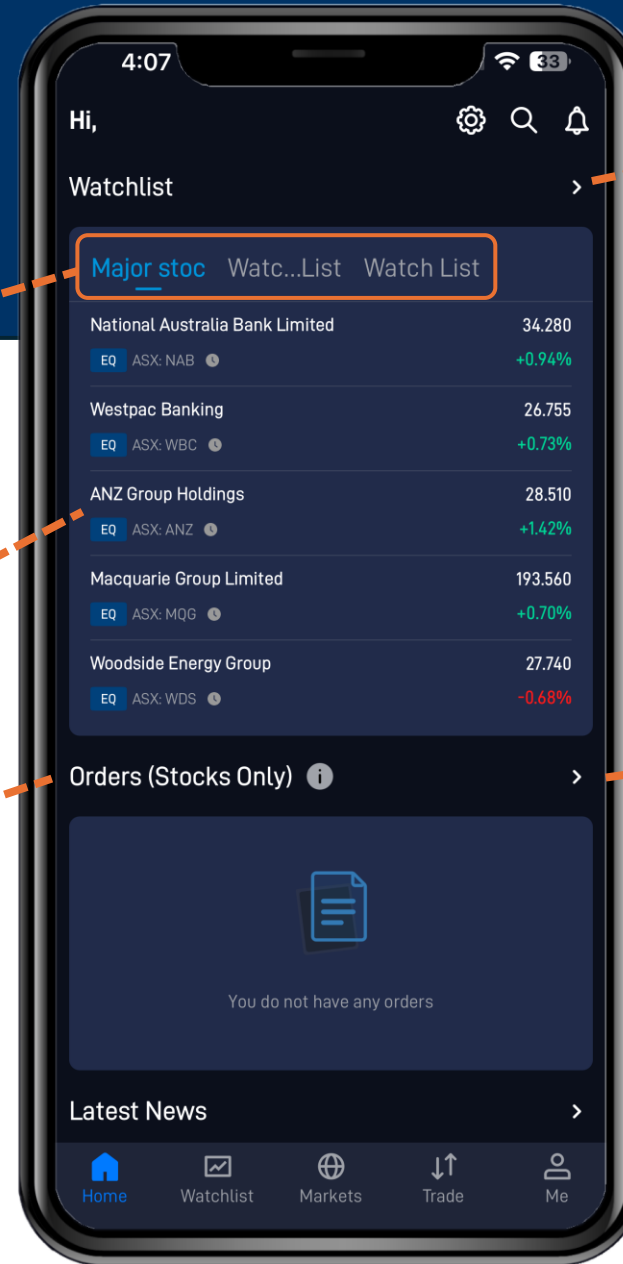
Click between the following to toggle between the main 5 tabs

Homepage Watchlist

Click to view specific watchlists
Movable panel: **Scroll left and right** to view more watchlists

Click on any of your displayed individual counters to enter details page

View your recent orders



Tap to access displayed watchlist under Watchlist tab

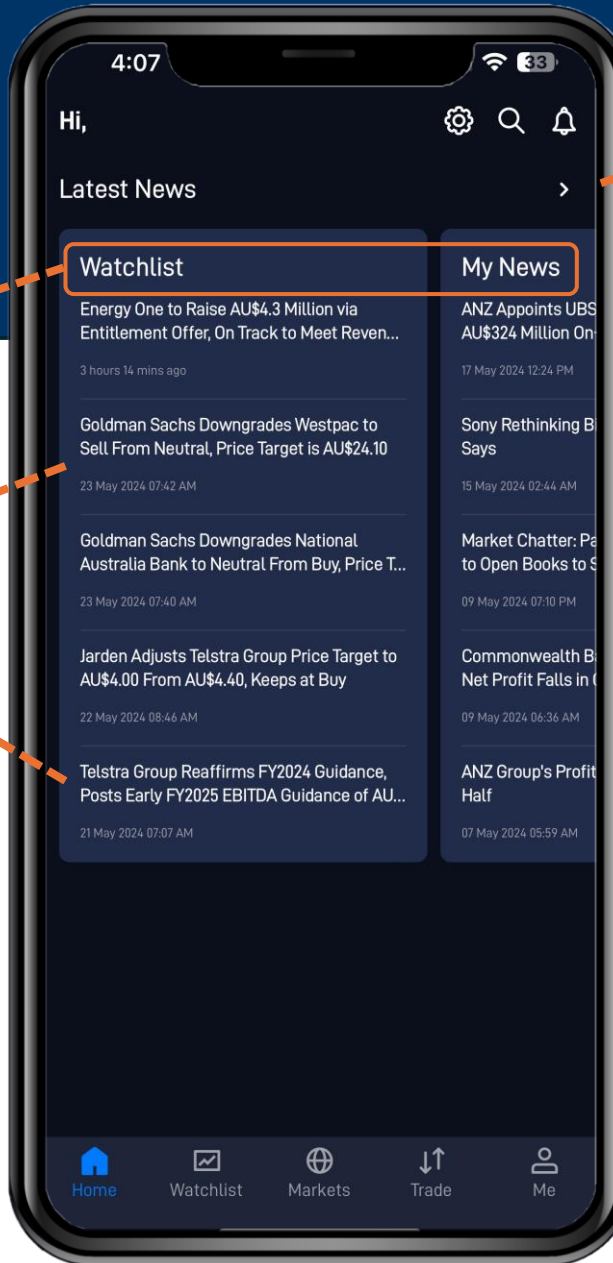
Tap to access orders tab under Trade tab

Homepage Latest News

Movable panel: **Scroll left and right** to view more news types

Tap on any of the headlines to view news

Tap to access Markets tab sub section News



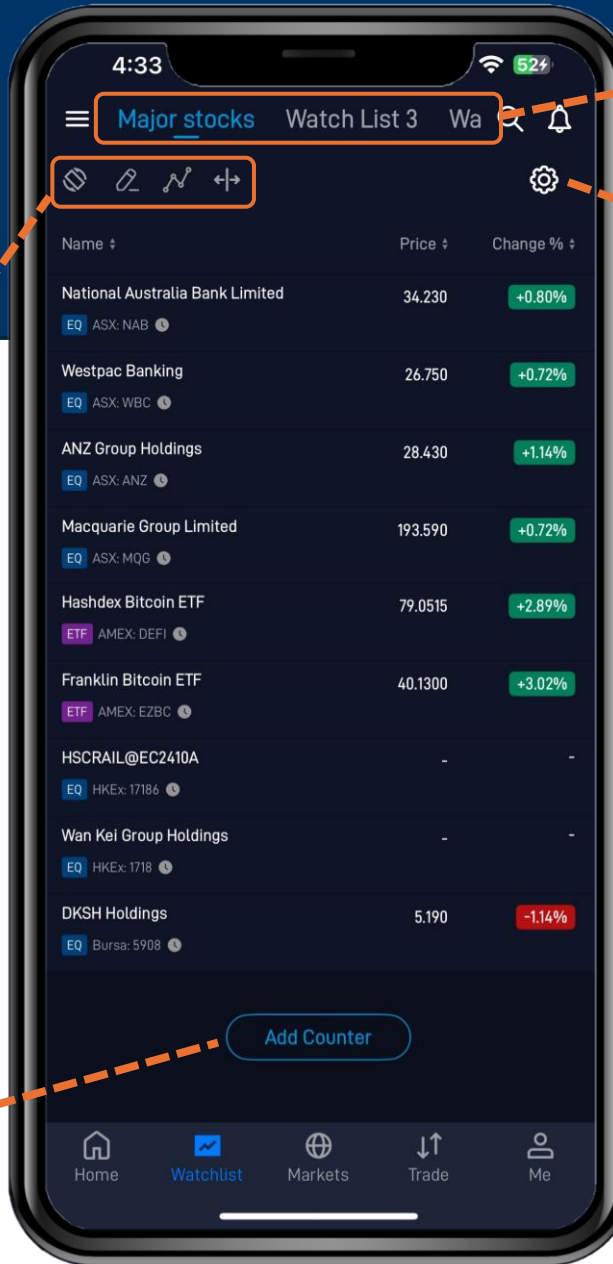
Watchlist

Option 1: Turn viewing from portrait to landscape view

Option 2: Edit displayed watchlist

Option 3: Display available graphs

Option 4: Expand counter detail options



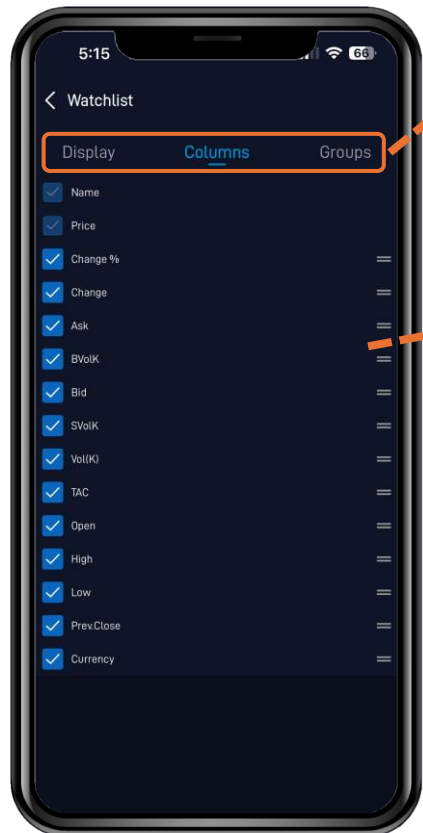
Click to view specific watchlists
Movable panel: **Scroll left and right** to view more watchlists

Tap to open watchlist customization options

Tap to access search bar to find stocks

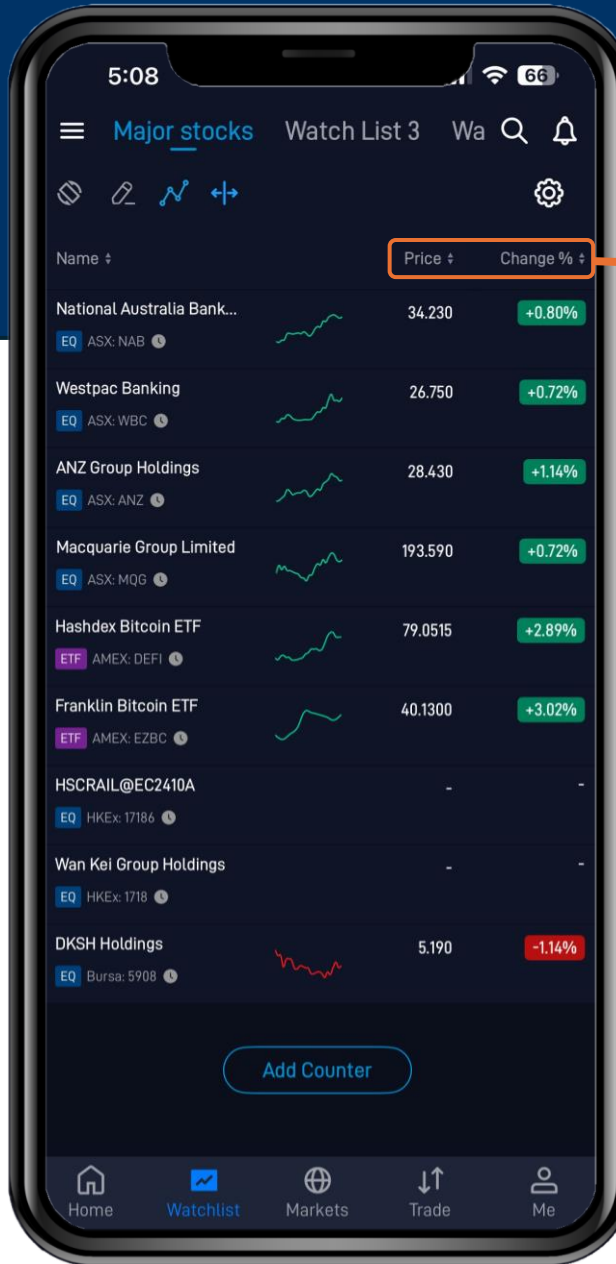
Watchlist

Expanded counter view



Available watchlist customization tabs

Available list of stock data attributes

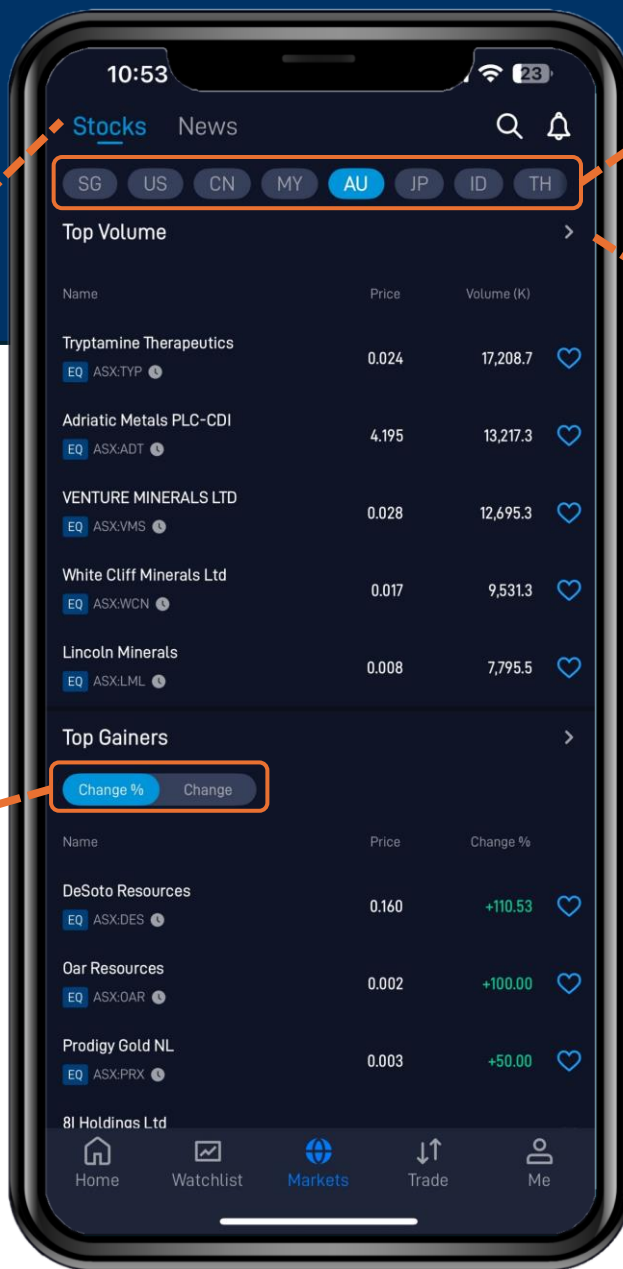


Movable panel: Scroll left and right to view more counter data

Markets Stocks

Toggle between Stocks and News

*Click to sort between viewing
Top movers in category by:
Change (%) or Change (\$)*



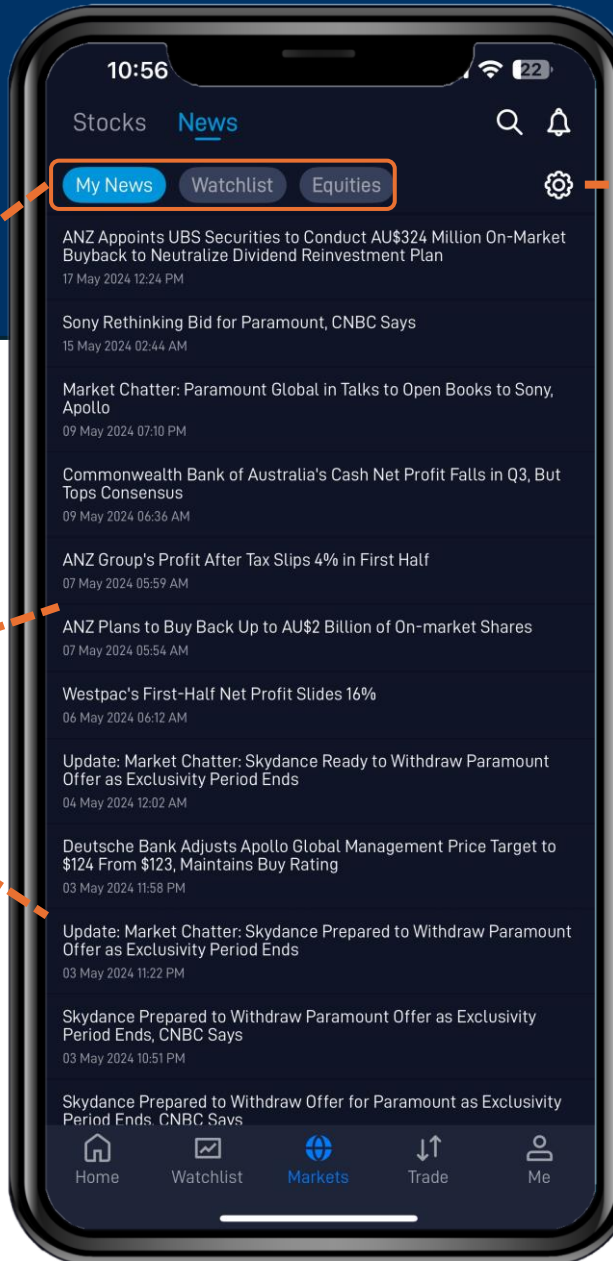
*Movable panel: **Scroll left and right** to select and view different markets*

Click to view top 30 stocks in the selected category

Markets News

Click to sort between viewing different news types

Tap on any of the headlines to view news



View My News Settings and customizable options

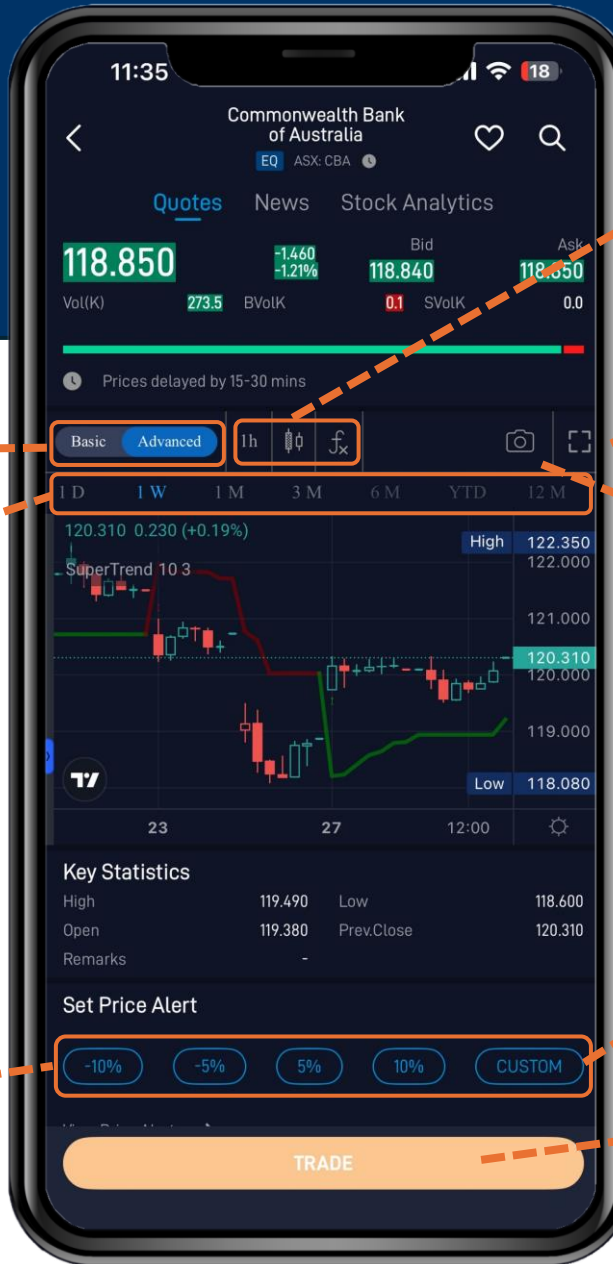
Markets

News - Equities

*Movable panel: **Scroll left and right** to select and view different news categories*



Stock Detail View



Select to customize display of Enhanced charting features

Tap to blow up full screen chart (11)

Tap to share/export chart image

Customise % change for price alert

Click to Trade selected ticker (12)

Toggle between Basic and Advanced Chart display

Select your desired Chart Date Range

Set a price alert for a % move in stock price

Stock Detail Full Display

Click to Trade selected
ticker (12)

Return to Portrait view

Scroll up and down to
view and select different
available charting tools



1h

Chart Intervals

MINUTES

1 minute

2 minutes

3 minutes

4 minutes

5 minutes

10 minutes

15 minutes

Chart Display Types

Bars

Candles

Hollow candles

Columns

Line

Area

Baseline

Chart Indicators

Indicators

Search

SCRIPT NAME

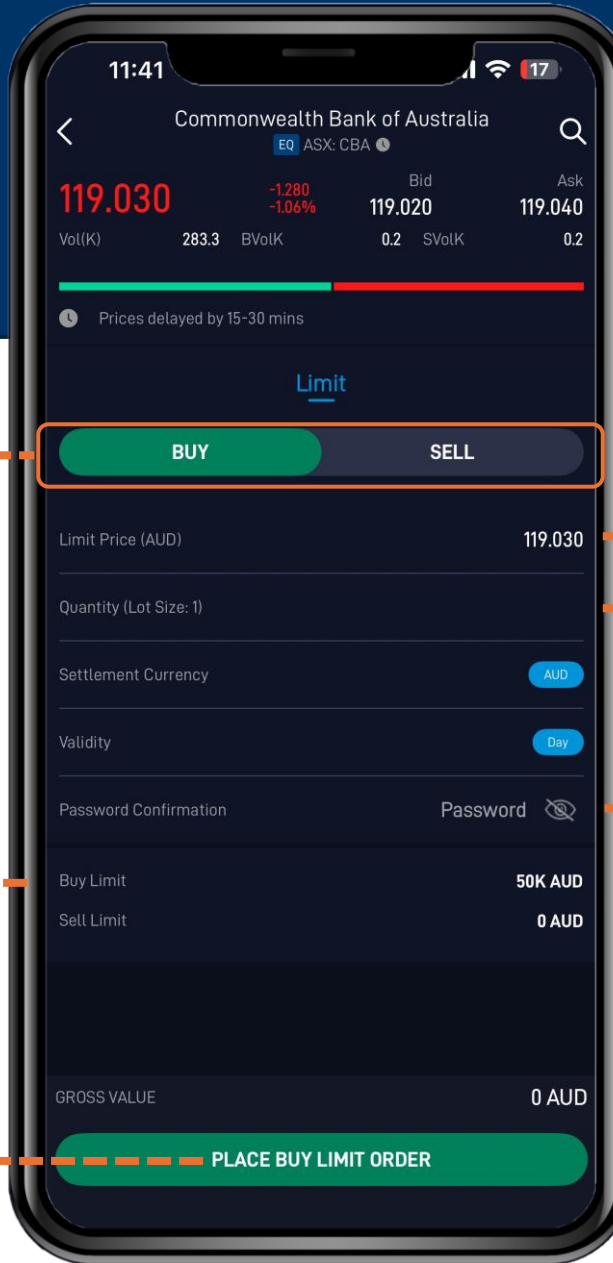
Accumulation/Distribution

Accumulative Swing Index

Advance/Decline

Arnaud Legoux Moving Average

Trade Screen



Tap to select respective trade type

Your buy limit balance is shown here

Tap to preview order before submission

Tap to manually enter desired price

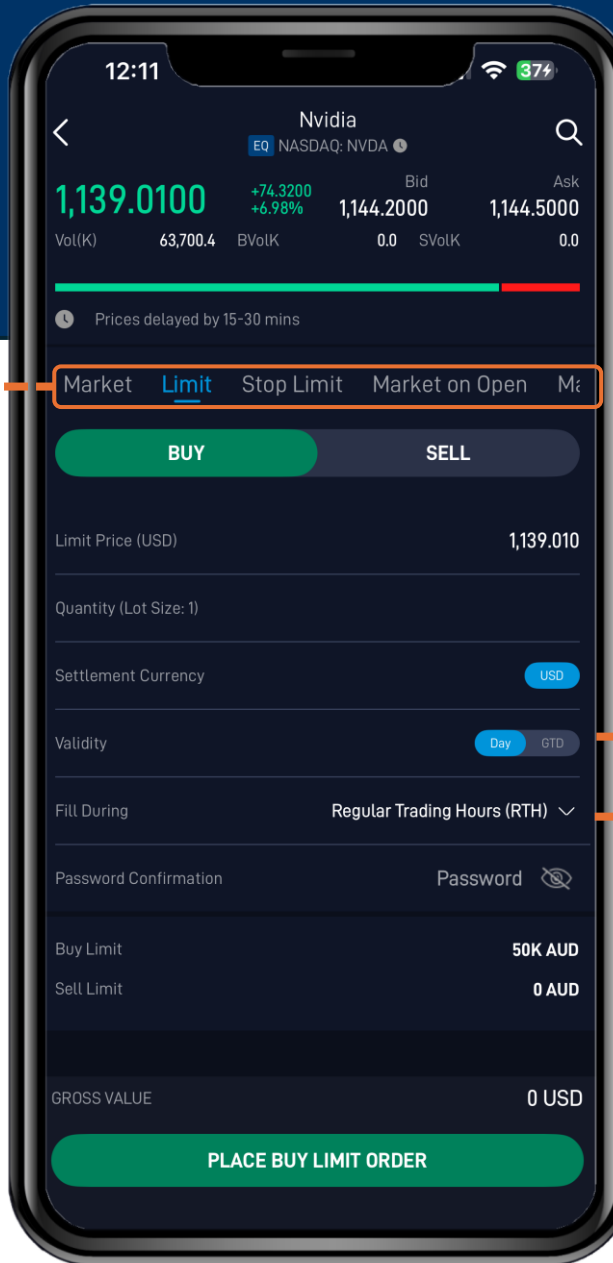
Tap to manually enter desired quantity in multiples of the lot size

Tap to enter password for trading confirmation

Trade Screen US Market

**Note enhanced order types only
available for US markets as of this version*

*Movable panel: **Scroll left
and right** to view and select
enhanced order types



*Select validity duration of trade
for day or good-till-date*

*Select option to execute trades
outside of regular trading hours*

Trade

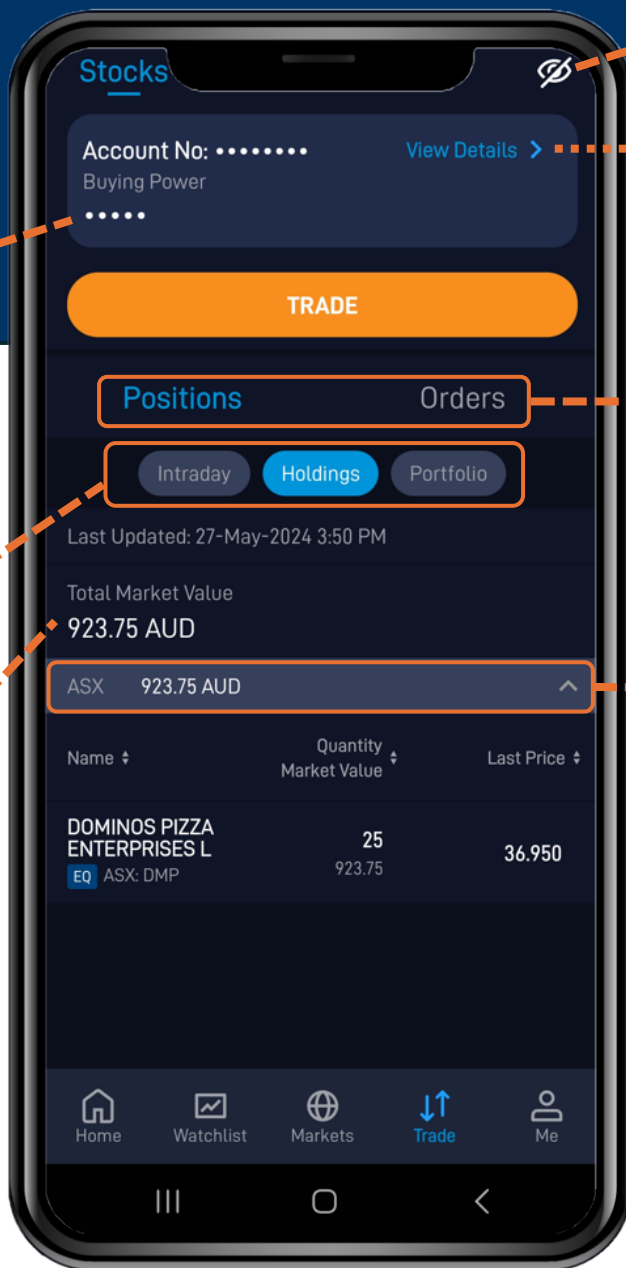
View available buying power

BP is the combination of all your currencies, denoted as a notional AUD amount

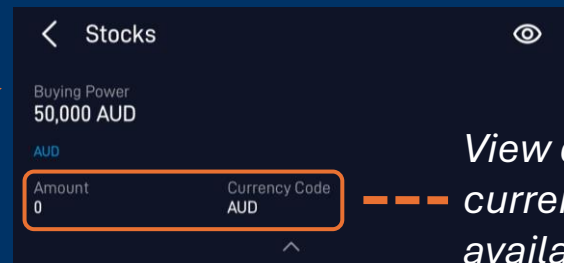
Tap to select between investment positions

- Intraday: Real-time Trading
- Holdings: Current Investments
- Portfolio: Overall Assets

Notional value of holdings denoted as AUD amount



Tap to toggle visibility of account number and buying power



View different currency of available cash

Tap to select between viewing stock positions and orders

Stocks are sorted by different exchanges and displayed in their own currency

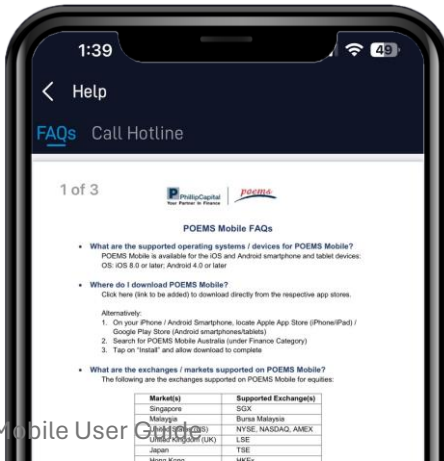
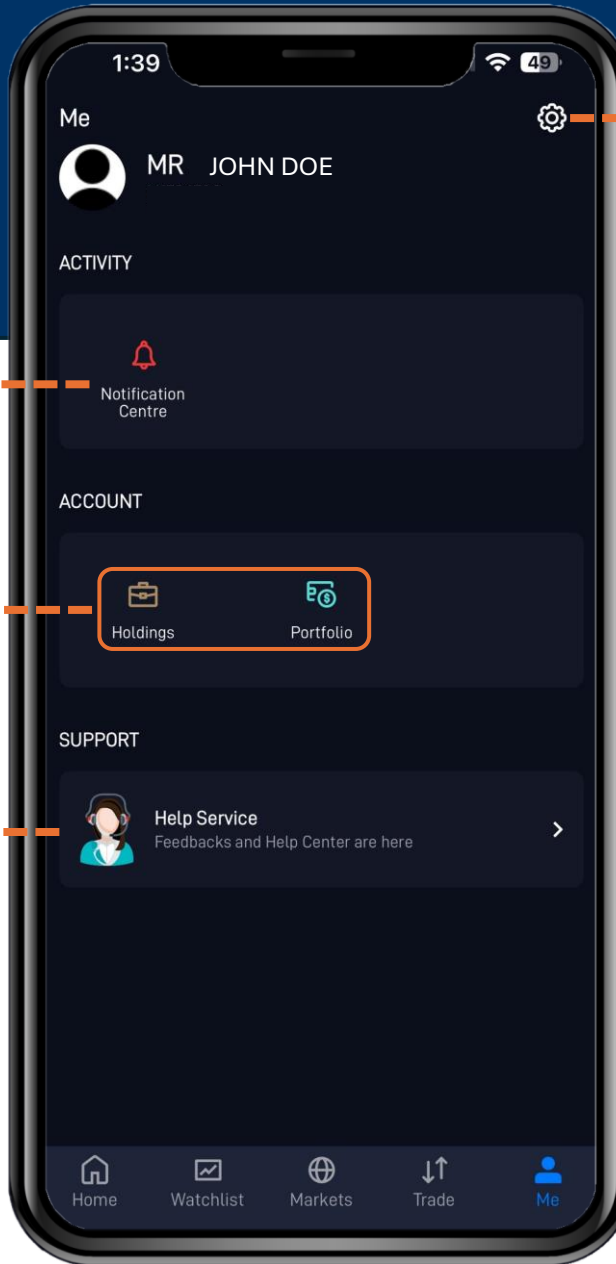
Me

Tap to access notifications centre

Tap to access Trade tab

Tap to access FAQs & Call Hotline

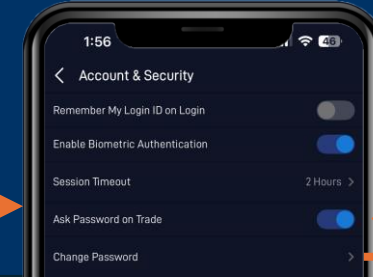
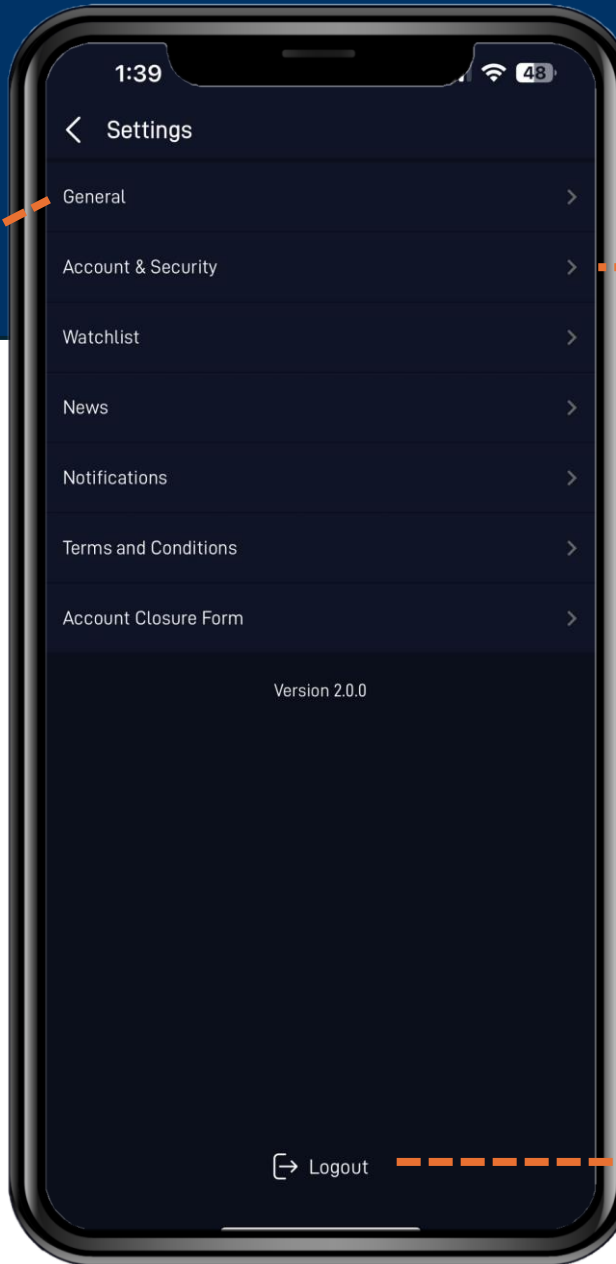
Tap to access full list of settings



Settings

Tap to access General account settings

- Language (ENG / CHI / JP)
- Font Size
- Theme (Dark / Light)



Toggle to prompt you for your password at every Trade screen

Tap to change password

Logout

Tap to logout